

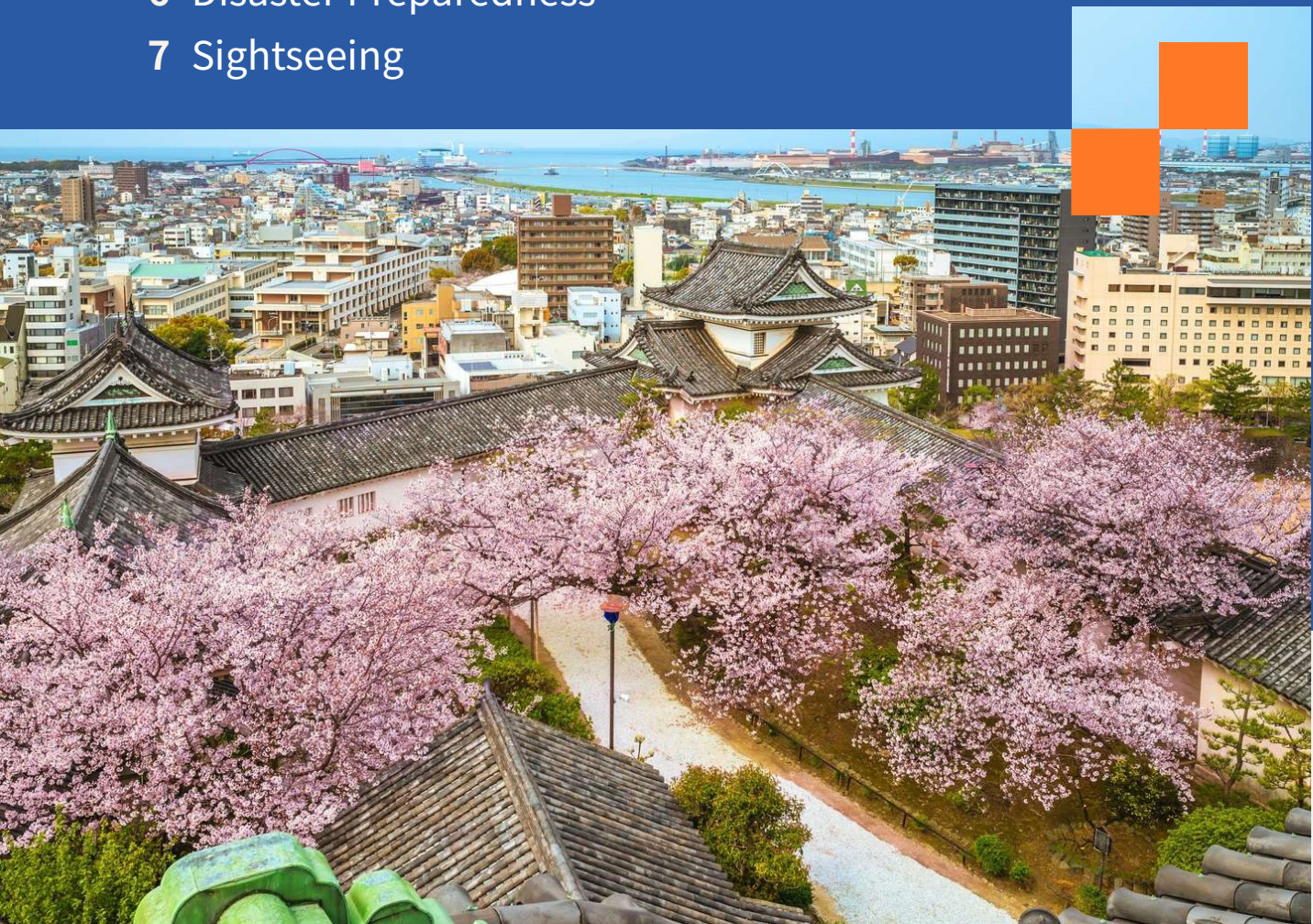
Essential Info at a Glance!

Wakayama City

Resident Guide

Contents

- 1-2 Government Procedures
- 3 International Exchange
- 4 Learn Japanese
- 5 Jobs & Health Care
- 6 Disaster Preparedness
- 7 Sightseeing



Inquiries

International Affairs Division, Wakayama City
23 Shichibancho, Wakayama City, 640-8511

TEL: 073-435-1010

EMAIL: kokusai@city.wakayama.lg.jp

Wakayama City Hall

📍 23 Shichibancho

Wakayama City, 640-8511

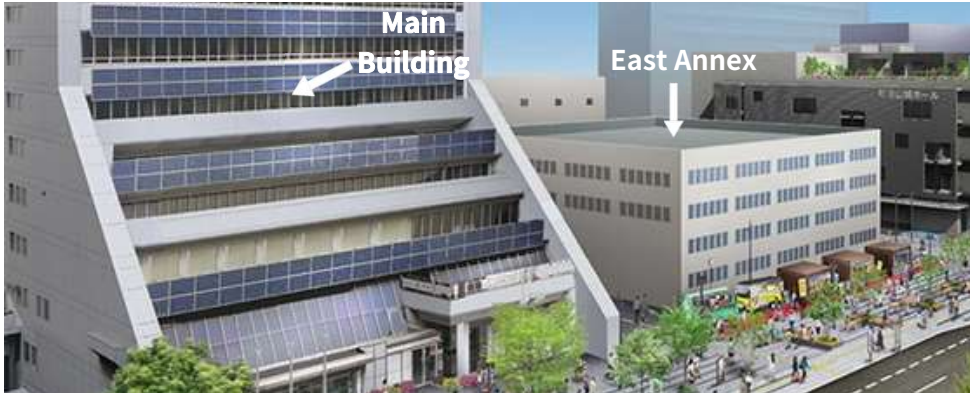
☎ 073-432-0001

Hours: Mon-Fri 8:30-17:15

Closed: Wknds & Hols.;

Dec. 29-Jan. 3

City Website



Moving Notifications

📍 Citizen's Affairs Division, Main Bldg. 1F ☎ 073-435-1027

- Moving In / Out
 - ※Report your move-in within 14 days of arriving in the city.
 - ※You can file your move-out notice up to 1 month in advance.
- Change of Address (within city)
 - ※Report your new address within 14 days of moving.
- Resident Certificate requests, Family Register filings (birth, marriage, etc.), My Number (Individual Number) services, Seal Registration



Apartment Search Guidebook (MLIT)

Scan the QR code and scroll down for the guidebook on apartment hunting in Japan.



Housing Safety Net (MLIT)

Lists rentals that are accessible to foreign residents. Scan the QR code to start your search.



Health Insurance

📍 National Health Insurance & Pension Division
Main Bldg. 1F ☎ 073-435-1057

- National Health Ins.: If you are under 74 and have a resident record in Wakayama City, you must enroll in National Health Ins. If you have employer health ins., you do not need to enroll.

📍 Insurance General Affairs Division
East Annex 1F ☎ 073-435-1062

- Late-Stage Elderly Medical Ins.: If you are 75+ (or 65+ with certain disabilities) and have a Wakayama City resident record, you must enroll in Late-Stage Elderly Med. Ins.



Children

📍 Child & Family Division, East Annex 2F
☎ 073-435-1219

- Child Allowance, Child Rearing Allowance, Child Medical Expense Subsidy, Medical Expense Subsidy for Single-Parent Families

📍 Daycare Division, East Annex 2F
☎ 073-435-1064

- Nurseries & Matters Involving Daycare Enrollment

📍 Education Support Division, Main Bldg. 11F
☎ 073-435-1139

- Elementary & Junior High Transfer Procedures



Pension System

📍 National Health Insurance & Pension Division
Main Bldg. 1F ☎ 073-435-1055

- National Pension Procedures
- ※All residents aged 20-59, regardless of nationality, must enroll in Japan's public pension system (Employee or National Pension).

Pension System Guide



Water Service

📍 Water Billing Center, Wakayama City
Waichi Bldg. 1F, 16 Shichibancho, Wakayama City
(west side of City Hall) ☎ 073-435-1298

- Apply at City Hall to start or stop water service.
- ※ City Hall does not handle electricity and gas directly. Please contact utility companies.



Trash

📍 **Waste Management Division, Main Bldg. 6F ☎073-435-1352**

- Wakayama City has rules regarding waste sorting and disposal. Check them and dispose correctly.
- Disposal days vary by area. Scan the QR to find your zone and pick-up schedule.



How to Sort Waste

Scan QR code and scroll down



Disposal-Day Schedule



Taxes

📍 **Residential Tax Div., Main Bldg. 2F ☎073-435-1036**

Tax Guide
(Immigration Bureau)



- Taxation/Non-Taxation Certs. • Tax Payment Certs.
- Local Tax (e.g. Inhabitant Tax) inquiries

※Scan the QR code for details.

📍 **Wakayama Tax Office (Osaka Tax Bureau)**
3 Nibancho, Wakayama City, 640-8520



- National Tax (e.g. Income Tax) inquiries

Hours: Weekdays: 8:30–17:00

Closed: Wknds & Hols.; Dec. 29–Jan. 3

※In-person consults require advance booking.
For details, scan the QR on the right.

Wakayama Tax Office Website



Visa Consultations

📍 **Wakayama Branch, Osaka Immigration**
6-22-2 Chikko, Wakayama City, 640-8287

Hours: 9:00–12:00, 13:00–16:00

Closed: Wknds & Hols.



- For Residence Cards, visa applications, and other residence status procedures, contact the Wakayama Branch of the Osaka Regional Immigration Services Bureau.

Immigration Bureau Website



Foreign Residents Support Center (FRESC)

FRESC offers help with residence issues in multiple languages. Scan the QR below to book an online session.



Cars & Motorbikes

Services Offered by JAF

📍 **640-3 Kozaika, Wakayama City,**
641-0007 ☎073-421-5355

Hours: 10:00~17:00

Closed: Wknds. & Hols.;
Dec. 29–Jan. 3

- Translation of Foreign Driver's Licenses

License Translation



JAF Website



Services Offered by City Hall

📍 **Residential Tax Division, Main Bldg. 2F ☎073-435-1035**

- Temporary Operation Permit (5-day plate) application.
 - **Light** Motor Vehicle Tax inquiries (≤ 660 cc).
 - Motorized Bicycle / Special Small Motor Vehicle (≤ 125 cc) registration.
- ※For **Standard** Motor Vehicles (≥ 661 cc), contact the Wakayama Prefectural Tax Office: Prefectural Gov't 2nd South Annex, 1-1 Komatsubara-dori, Wakayama City 640-8585

Services Offered by Wakayama Prefectural Police

📍 **Transportation Center, 1 Nishi, Wakayama City, 640-8313**
☎073-473-0110

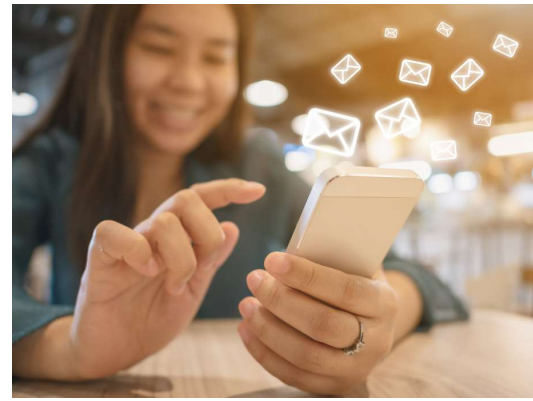
- Renew your license
※Accepted from 1 mo. before to 1 mo. after your birthday.
- Convert a foreign license to a Japanese one.
※Pre-consultation required.
See the QR on the right.
- Change license details.
- Reissue a lost license.
- Take the driving test.

Police Website



License Conversion

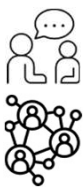




International Affairs Division

📍 Wakayama City Hall (Main Bldg. 10F), 23 Shichibancho, Wakayama City 640-8511
☎ 073-435-1010 FAX 073-435-1252 ✉ kokusai@city.wakayama.lg.jp

Connect in Wakayama City!



Looking to join events or get helpful info in your language? We send out a monthly multilingual newsletter and host exchange events. Our friendly staff speak English, Chinese, and Korean—say hello!



Wakayama City's LINE shares a variety of different information—just scan the LINE QR code below to subscribe!



Also check our Facebook, X (Twitter), and Instagram for important updates.

Follow us!

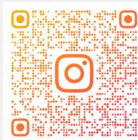
Facebook



X



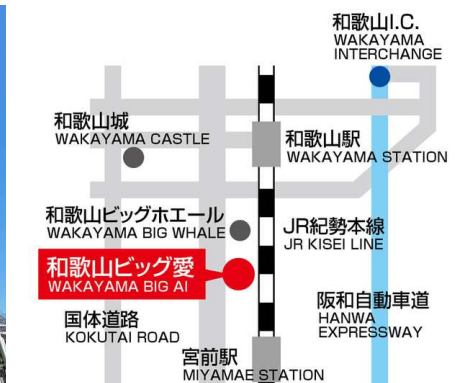
Instagram



LINE



KYC
Newsletter



Wakayama International Exchange Center

📍 Wakayama Big-Ai Bldg. 8F, 2-1-2 Tebira, Wakayama City 640-8319
☎ 073-435-5240 FAX 073-435-5243 ✉ wa-world@wixas.or.jp

The Wakayama International Exchange Association offers Japanese classes for foreign residents in Wakayama, a consultation service for issues regarding life in Japan, and exchange events where you can explore world cultures and connect with the local community.

Life Consultation for Foreigners

Languages: Japanese • English • Filipino • Chinese • Vietnamese

※ Available times vary by language.

See the QR below for details.

🕒 10:00–18:30 📅 Wed., Hols.; Dec. 29–Jan. 3

Wakayama Pref. Support Mail



Updates in easy Japanese, English, and more—straight to your inbox!



Official Website



Learn more about the exchange center and tips for living in Wakayama.



Learn Japanese

Wakayama offers classes at every level—from first-timers to advanced. Everyone is welcome, so come join the fun!



Japanese Classes at Wakayama City Hall

Beginner-friendly and free of charge.



Prefecture-Wide Japanese Course List

Find the perfect class, from beginner to advanced.



Online Japanese Course (MEXT)

Learn Japanese with fun videos & quizzes—Free and available on your phone or PC.



Online Japanese Study Links (MEXT)

Choose the e-learning site that suits you and study anytime, anywhere.



Translation App VoiceTra

Super handy if you don't know Japanese! This free app instantly translates what you say into another language!



App Store



Google Play

Download Here! (Free)

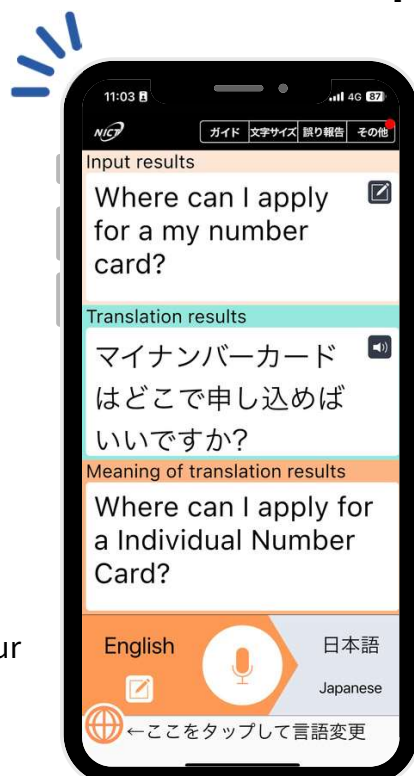
How to Use

- 1 Select your language and the target language.
- 2 Tap the mic button, start speaking, and your speech will be translated.
- 3 Check the translation on screen.
- 4 Show the screen or play the audio.



Tips

1. Hold the mic about 2 cm from your mouth.
2. Start speaking immediately after tapping the mic button.
3. Use short, clear sentences.
4. If it makes a mistake, redo from the start.



For moments like these!



At City Hall



"My address has changed."

At an Evacuation Shelter



"I need medicine."

At a Hospital



"I have stomach pain."

At a Ramen Shop



"One bowl of chashu-men, please."

At the Station



"Which train goes to Kimiidera?"

While Shopping



"Do you have another size?"

Job Hunting

Looking for a job or want to learn new skills? Japan offers support to help foreigners find work.

01



WAKAYAMA
外国人材雇用
サポートデスク

WAKAYAMA Job Support Desk

Supports foreigners who want to work or are already working in Wakayama. Feel free to consult about any job-related concerns!



02



Hello Work

We're here to help you find a new job. If unemployed, you may be eligible for financial support to help you get back to work.



03



Osaka Foreign Worker Service Center

A Hello Work office supporting foreign residents in Japan. Get job advice, join interview events, and more.



04



Human-Rights Hotline (MOJ)

Treated badly because you're a foreigner? It may be a human rights issue. You're not alone—talk to the Legal Affairs Bureau.



Health care is available in multiple languages. Find a facility that suits you and receive help with confidence!

Health Care

01



AMDA Medical Information Center

Ask about hospitals and health in a variety of different languages. Free medical interpretation is also available.

02



Medical Information Net (MHLW)

Search via a different language to find medical facilities that offer services in your native language.

03



Yoriso Hotline

Feeling stressed or having trouble in daily life? Free consultation is available in many different languages. Scan the QR code and select the "Yoriso Hotline – Foreign Language Line."

04



Domestic Violence Hotline Plus (Cabinet Office)

Specialists are here to help with domestic violence (DV). Whether you've been hurt, want to escape, or are concerned about your child's safety—you can consult them anytime.

01 Understand Disaster Risks

Typhoons, heavy rain, earthquakes, tsunamis, and fires—Japan faces many kinds of natural disasters. Typhoons are most common from summer through autumn. Heavy rain can cause rivers to overflow and trigger landslides. A major Nankai Trough earthquake could bring a massive tsunami—move inland and to higher ground.



Earthquakes



Typhoons



Heavy Rain



Fires



Tsunami



Lightning

03 Check Disaster & Safety Info

Use disaster alert apps and websites. Register on your smartphone in advance and check for updates before a typhoon or other emergency.



Wakayama City Disaster-Info Email
Register ahead of time to receive alerts.



Safety Tips
Multilingual disaster & evacuation alerts.



NHK Multilingual Portal
Life and safety info in many languages.



NHK World
Multilingual disaster news & more.



JMA Multilingual Information
Check weather, quakes, tsunamis & more.



Evacuation Info Explained (Cabinet)
Shows alert levels & evacuation flow.



Municipal Hazard Map (Japanese only)
Confirm shelters & risk zones.



02 Stay Prepared



1. Pack an emergency go-bag.



2. Secure furniture.



3. Stock water and food.



4. Download disaster prevention apps.



For more details, scan the QR code and check out WIXAS's Disaster Guide!



WIXAS Disaster Guide

Prep tips and other handy info inside.



04 Know Your Evacuation Plan



1. Create a timeline. (Evacuation Plan)
Evacuation timing is different for everyone. Make a plan: who does what, when?



2. Look up evacuation shelters ahead of time.



3. Know how to get there. Practice walking the route from your home to the evacuation center.



4. Make sure there are no dangerous rivers, drainage areas, etc. on the route to your evacuation shelter.



Wakayama Bosai Navi

App showing shelters and risk zones.



About My Timeline (CLAIR)

Learn how to make your own timeline.



Dive into Wakayama City!

Your next adventure begins here. Climb the stone walls of beautiful Wakayama Castle for sweeping city views. Savor fresh seafood right by the ocean. Feel the pulse of festivals—drums pounding, dancers whirling, smiles everywhere.

Whether you're a kid or a kid at heart, fun awaits. Come feel the heartbeat of your new home.



WAKAYAMA CASTLE



Sightseeing Maps

Choose a map and start exploring!



City Event Calendar

Join local events to make lasting memories!



Top Sightseeing Spots in Wakayama City

Scan the QR to view each spot's webpage or promo video.



WAKANOURA



KADA - TOMOGASHIMA



KUMANO KODO KIIJI ROUTE



FOOD HUNTER PARK



KIMIIDERA TEMPLE



WAKAYAMA MARINA CITY

Publisher

International Affairs Division, Wakayama City Hall
23 Shichibancho, Wakayama City,
Wakayama 640-8511, Japan
Email: kokusai@city.wakayama.lg.jp
Tel: +81 73 435 1010